

Zooguu

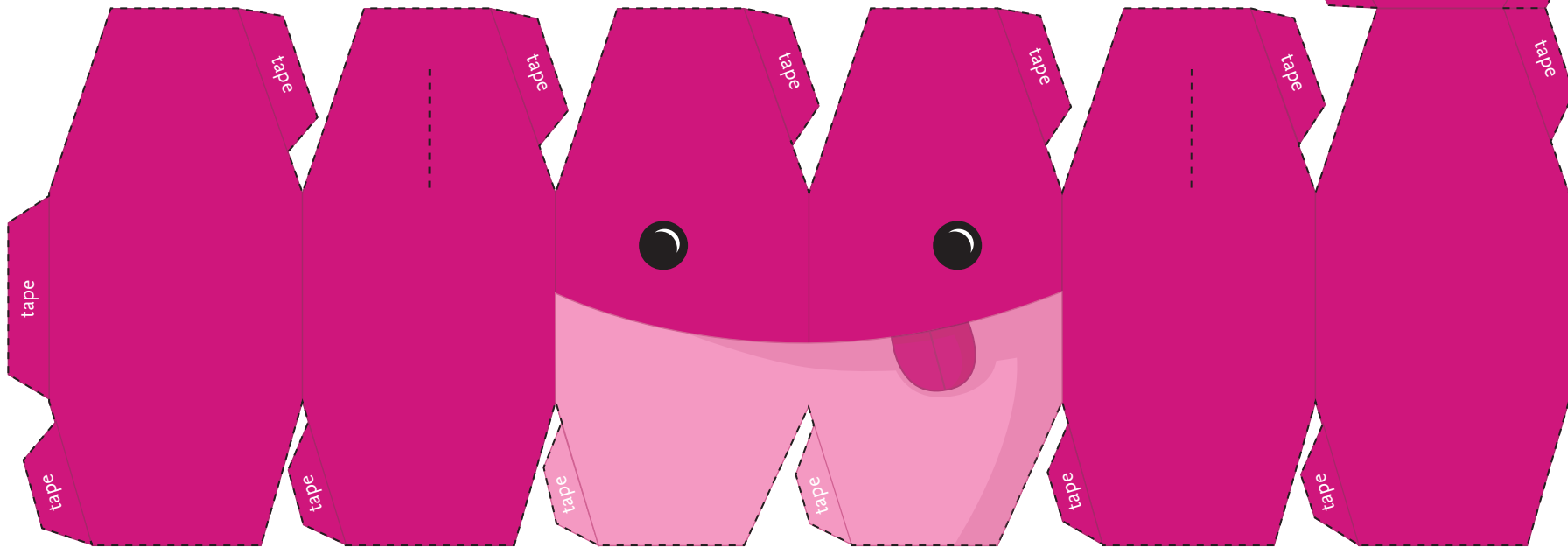
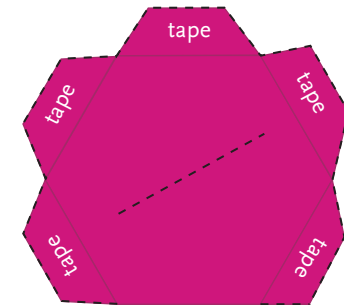
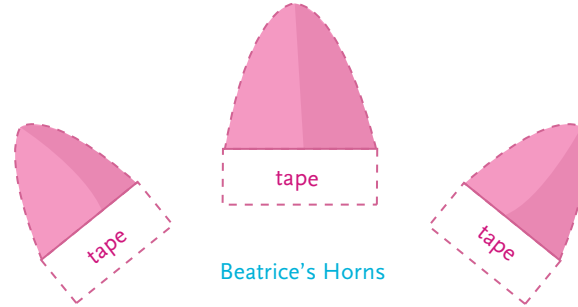
HANDMADE

PAPER TOY CRAFT - BEATRICE MONSTER



Jen & Brian Gubicza | zooguu.com

1. Cut out all of the pieces along the black dotted line
2. Score all of the tabs along the dark pink lines.
3. Put double-sided tape or use a glue stick on every tab.
5. Begin by folding Beatrice's body and sticking the tabs to the underside of the next piece.
6. Attach the the horns, one on each side and one into the top.



Beatrice's Body